

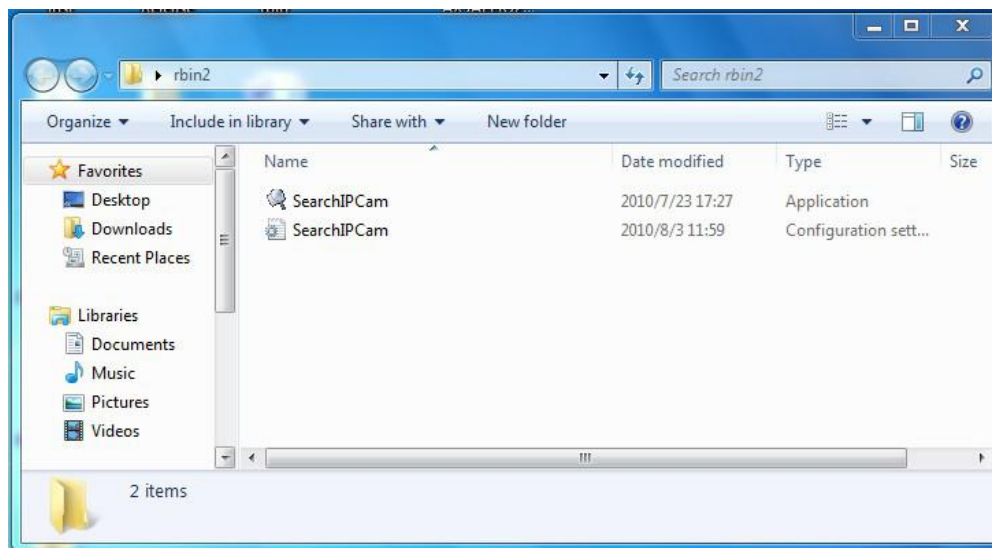
How to Check the GUID and QR Code UID

Download the SearchIPcam tool and put it on your PC(if you still not have the tool, you need to download it at first)

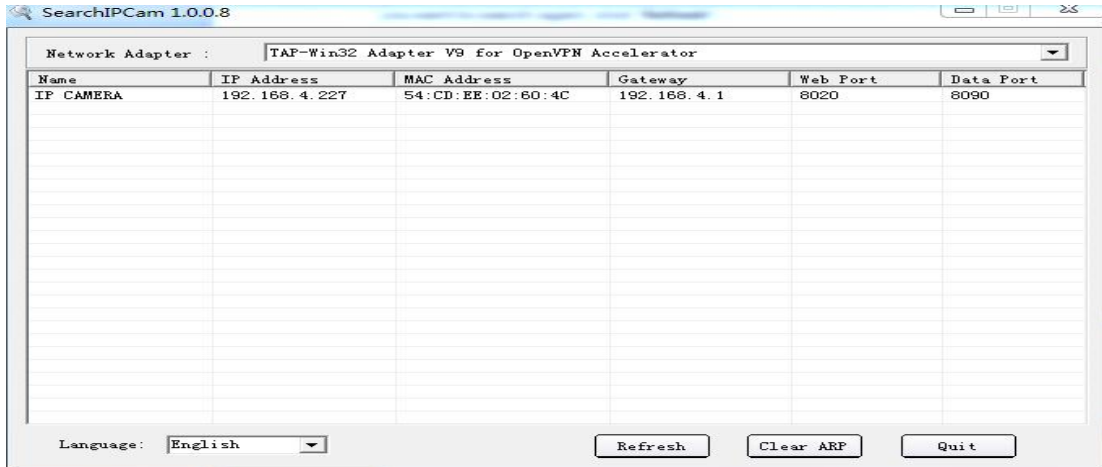
https://www.dropbox.com/s/phph8650jrbcwa/SearchIPcam__1.0.0.8.zip?dl=0 (for Windows OS PC)

Step 1: Please connect your camera to local network, and we suggest you connect your camera to local network with network cable connection so that the network is stable for the camera.

Step 2: Run “**SearchIPCam.exe**” to find IP address of LAN on your PC



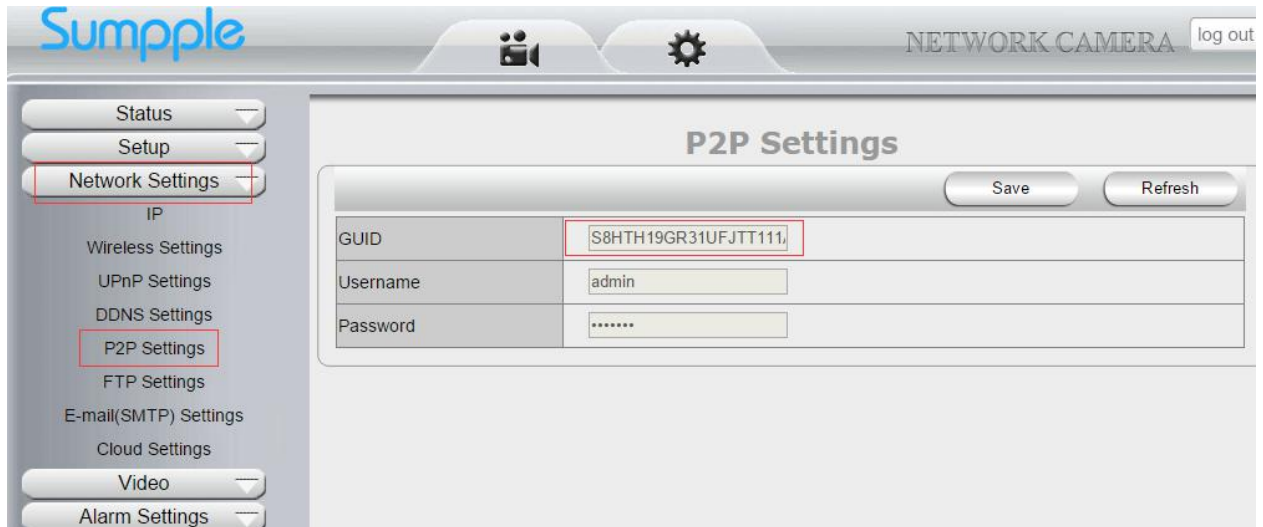
Step 3: Double click “Search IPCam.exe”, the camera’s IP & MAC address will be displayed. If you want to search again, click “Refresh”.



Step 4: Double Click the IP Address of the camera and there will pop up a Window of the camera program. And the Username is **admin** and the Password is **sumpple**



Step 5: Check the GUID



Step 6: Check the QR Code UID and the QR Code label is on the camera



Please have a check whether the GUID is the same as the QR Code UID. If they are not the same one, you can't not connect the camera to network on the cell phone App. And we will help you change them as the same one. If you find they are the same, then there may be the camera problem and we will send you a new replacement one at no cost as soon as possible.