

How to Set Wireless WiFi on PC?

4.3.2 Wireless Settings

Click the icon "Search" to scan the wireless network in this environment automatically.

Using Wireless Lan: Set Wi-Fi ON/OFF.

SSID: the ID of Wireless network, it should be the same SSID as the connected Wi-Fi router.

Network Type: Two modes:

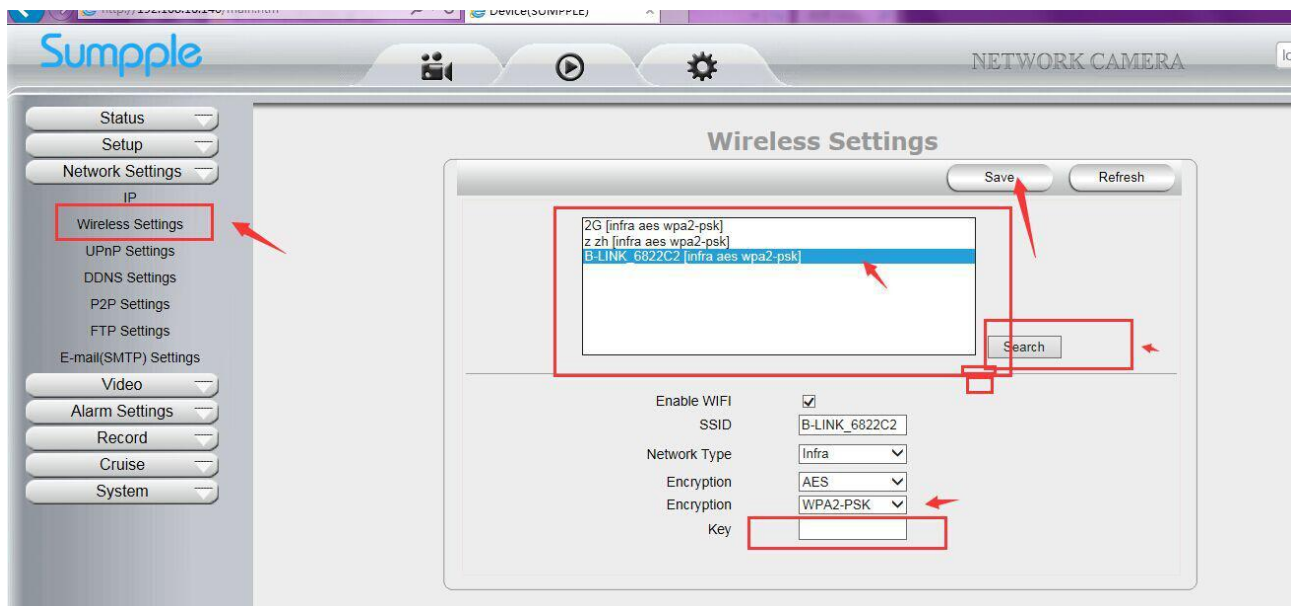
1. **Infra** (Infrastructure Mode), if using normal AP, choose **Infra** mode.
2. **Ad-Hoc** Mode. If using point-to-point transmission, choose **Ad-Hoc** mode.

The factory setting is **Infra**.

- **Encryption:** WEP, TKIP, AES optional.
- **Authentication:** **WEP:** Open System or Share Key. **TKIP (AES):** WPA-PSK or WPA2-PSK.
- **Select Key:** Choose the channel of WEP share Key.
- **Key:** Input the key the same as the settings in your router.

All the Wi-Fi encryption mode settings should be the same as your Wi-Fi router, and different encryption has different authentication menu.

1. Please check the image how to set the wifi



After you click "Save", please put out the network cable at first, then wait for the camera display the IP again on the SearchIPcam, when the IP show, then you can login in the program again.

Note 1: for the wireless WiFi setting, the Router will often assign a different IP to the camera on wifi, so please check the IP address in the SearchIP tool.

Note 2: Please enter the **correct** Wifi password on "Key" textbox, so many customers enter wrong password and can't connect to wifi.