

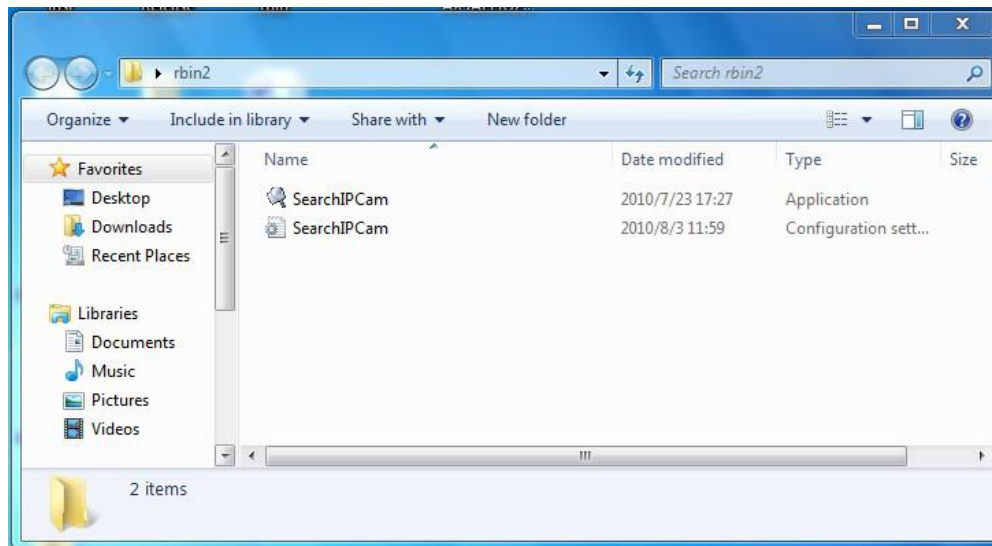
## How to Set the Local Video Recording on PC

Download the SearchIPcam tool and put it on your PC(if you still not have the tool, you need to download it at first )

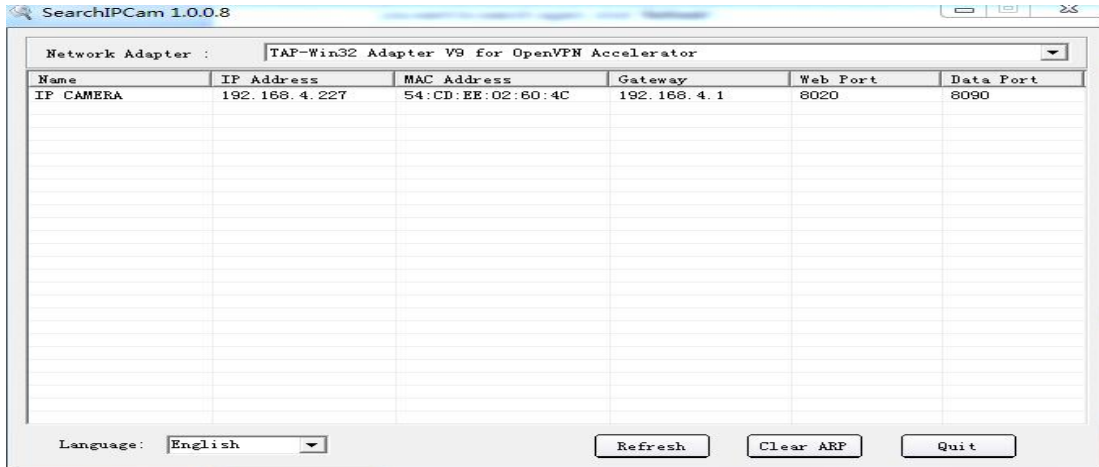
[https://www.dropbox.com/s/phph8650jrbcwa/SearchIPcam\\_\\_1.0.0.8.zip?dl=0](https://www.dropbox.com/s/phph8650jrbcwa/SearchIPcam__1.0.0.8.zip?dl=0) (for Windows OS PC)

Step 1: Please connect your camera to local network, and we suggest you connect your camera to local network with network cable connection so that the network is stable for the camera.

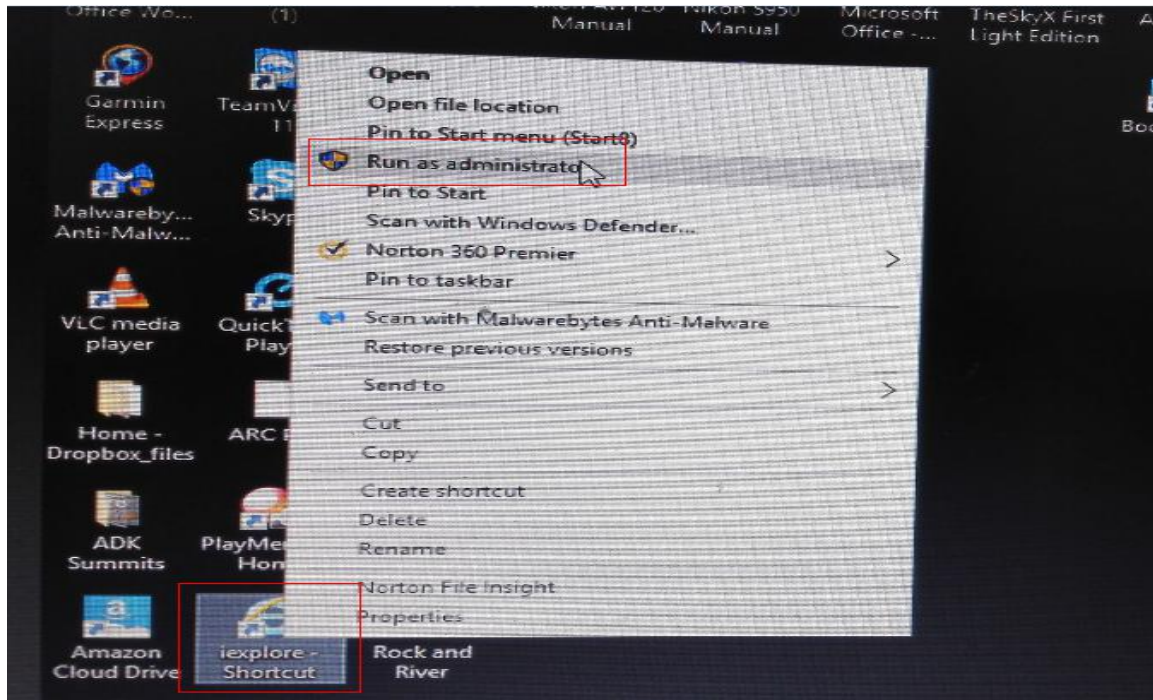
Step 2: Run “**SearchIPCam.exe**” to find IP address of LAN on your PC



Step 3: Double click “Search IPCam.exe”, the camera’s IP & MAC address will be displayed. If you want to search again, click “Refresh”.



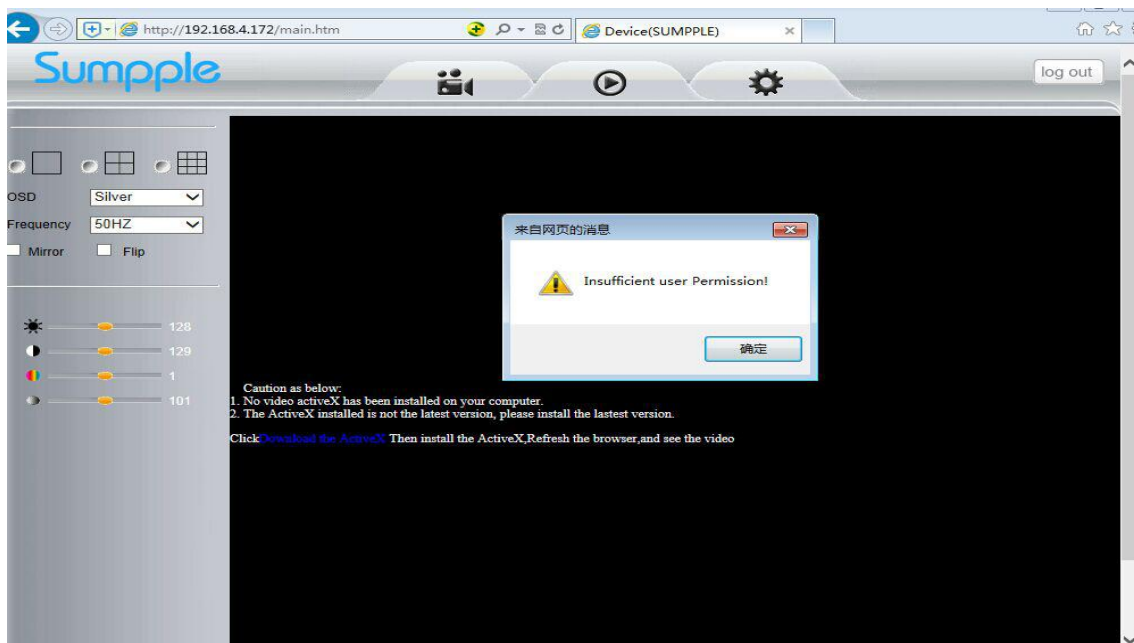
Step 4: Right click the IE 32bit web browser and choose "Run as administrator " to open it (If you can't find the IE 32 bit browser, then please go to "C:\Program Files (x86)\Internet Explorer\iexplore.exe" to find it). **Note:** if you use Windows 7 or above, you need to choose "**Run as administrator**" to open the IE 32bit browser.



Step 5: Enter the camera IP address show on the SearchIPCam into into the IE 32bit browser, and click "Enter" button on keyboard. And there will be a window of the camera program. And the Username is **admin** and the Password is **sumpple**



**Note:** after you login in the camera program and it is possible to ask you to install the OCX ActiveX for the first time to login;



OCX will be downloaded automatically when click it to download, but you might have to set the IE browser to enable the OCX to be downloaded and installed. Steps as below:

**A:** Close the firewall of your computer.

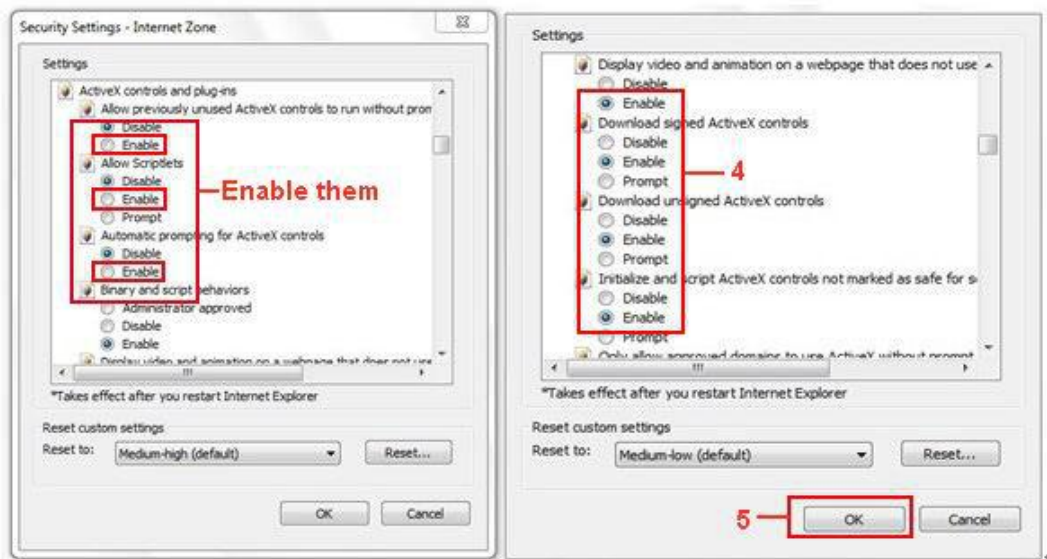
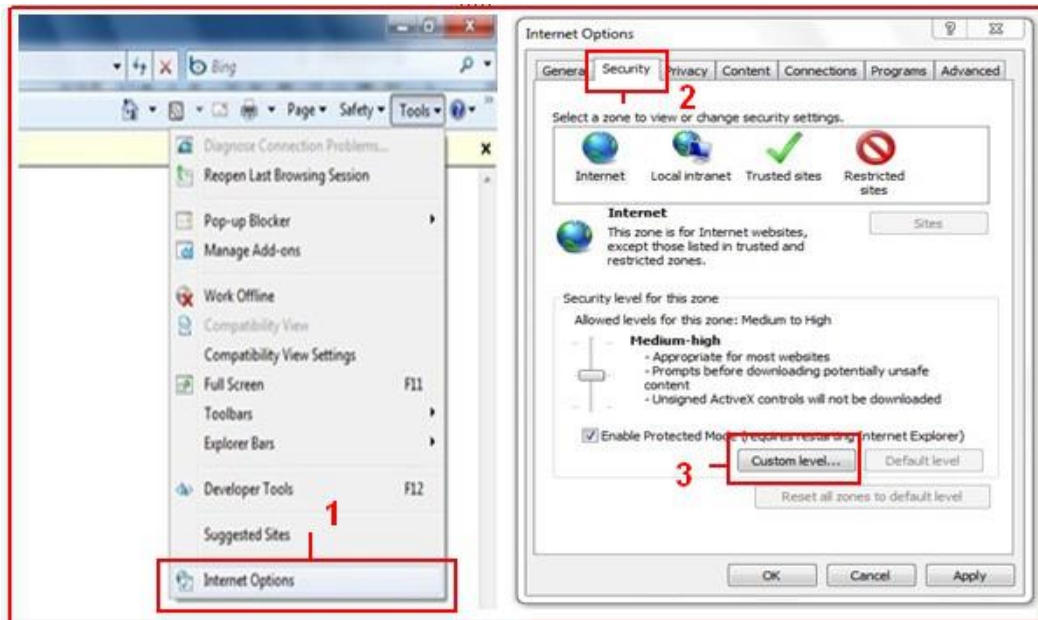
**B:** Change the ActiveX settings, "IE" browser > "Tool" > "Internet Options" > "Security"> "Custom Level" > "ActiveX control and Plug-ins", all the ActiveX options set to be "Enable":

Especially:

**Enable: Download unsigned ActiveX controls**

**Enable: Initialize and script ActiveX controls not marked as safe**

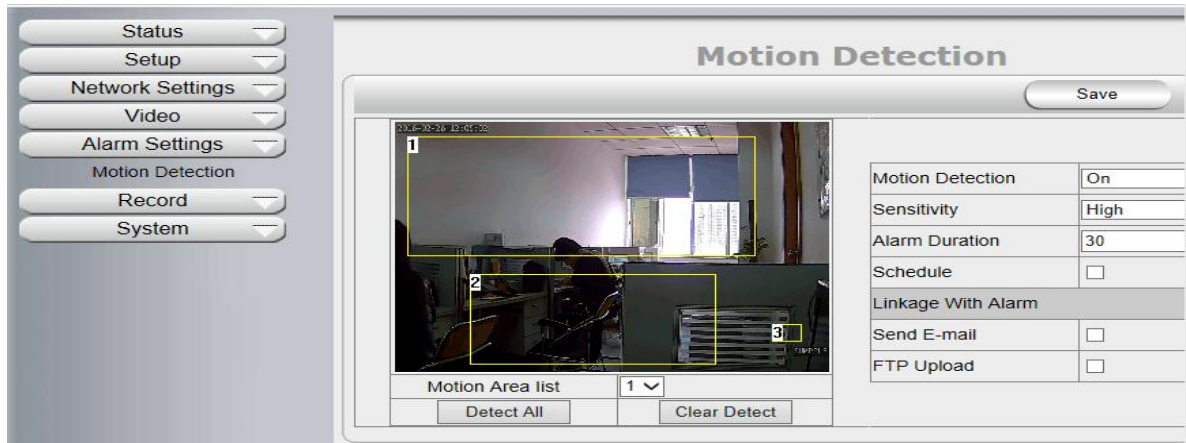
**Enable: Run ActiveX controls and plug-ins**



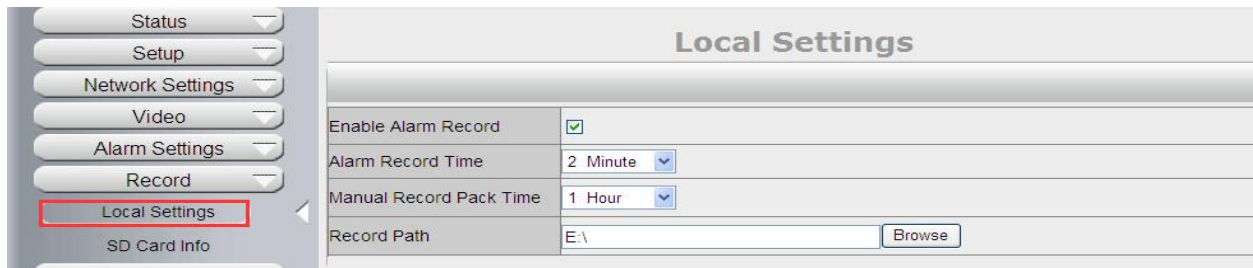
You can also click "Start" menu->"Internet Explorer", and choose "Internet attributes", or via "Control Panel" ->"Internet Explorer", to access Security settings.

When you see the video, then you can go to the Step 5

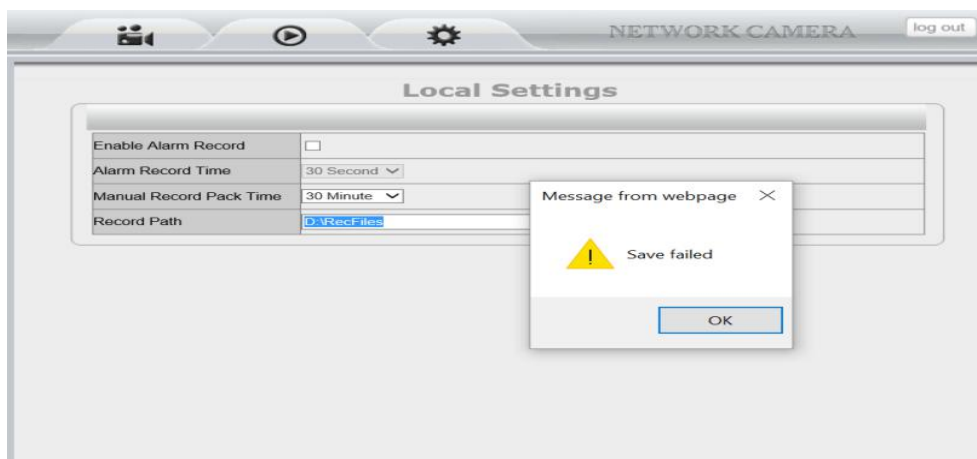
### Step 5: Set the Motion Detection



### Step 6: Set the Record Path



If you face the problem of saving the record path, see the screenshot, please right click the IE 32bit web browser and choose "Run as administrator " to open it. **Note:** if you use Windows 7 or above, you need to choose "Run as administrator" to open the IE 32bit browser.



**Note:** to make the motion detection works well at night, please manually set the IR Control as "on" to change to Night Vision model when it is at night; if at data time, please manually set the IR Control as "Auto" when it is at day time.