

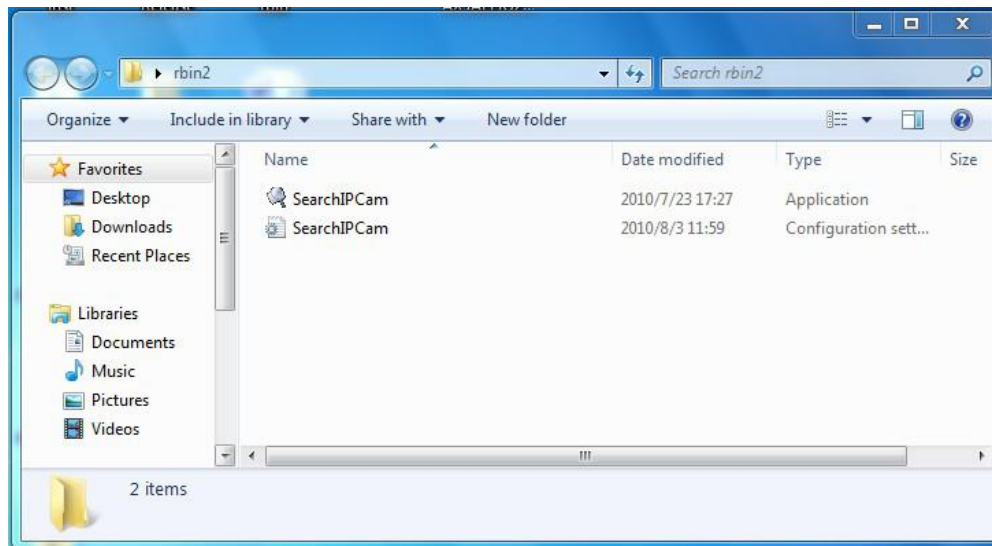
How to Do SD Card Recording on Windows PC

Download the SearchIPcam tool and put it on your PC(if you still not have the tool, you need to download it at first)

https://www.dropbox.com/s/php8650jrbcw/SearchIPcam__1.0.0.8.zip?dl=0 (for Windows OS PC)

Step 1: Please connect your camera to local network, and we suggest you connect your camera to local network with network cable connection so that the network is stable for the camera.

Step 2: Run “**SearchIPCam.exe**” to find IP address of LAN on your PC



Step 3: Double click “Search IPCam.exe”, the camera’s IP & MAC address will be displayed. If you want to search again, click “Refresh”.

SearchIPCam 1.0.0.8

Network Adapter : TAP-Win32 Adapter V9 for OpenVPN Accelerator

Name	IP Address	MAC Address	Gateway	Web Port	Data Port
SUMPPLE	192.168.1.111	54:CD:EE:02:E2:DD	192.168.1.1	80	38401
SUMPPLE	192.168.1.105	54:CD:EE:02:E2:01	192.168.1.1	80	38401

Step 4: Right click the IE 32bit web browser (If you can't find the IE 32 bit browser, then please go to "C:\Program Files (x86)\Internet Explorer\iexplore.exe" to find it).

Step 5: Enter the camera IP address show on the SearchIPCam into into the IE 32bit browser, and click "Enter" button on keyboard. And there will be a window of the camera program. And the Username is **admin** and the Password is **sumpple**

Sumpple NETWORK CAMERA

Username: admin

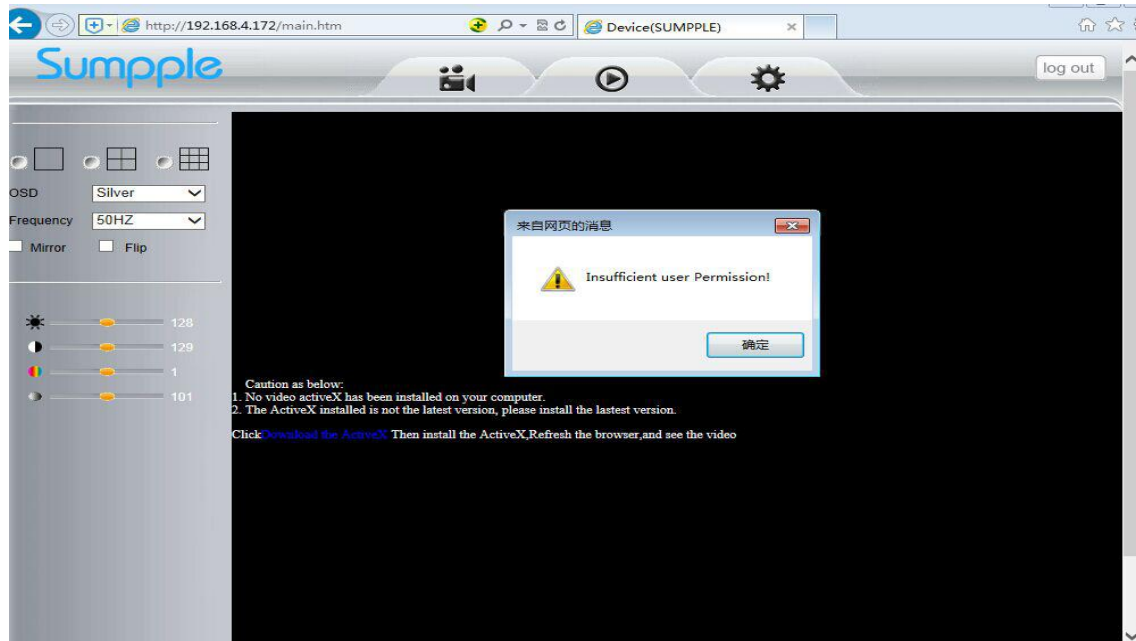
Password:

Language: English

save password

Login

Note: after you login in the camera program and it is possible to ask you to install the OCX ActiveX for the first time to login;



OCX will be downloaded automatically when click it to download, but you might have to set the IE browser to enable the OCX to be downloaded and installed. Steps as below:

A: Close the firewall of your computer.

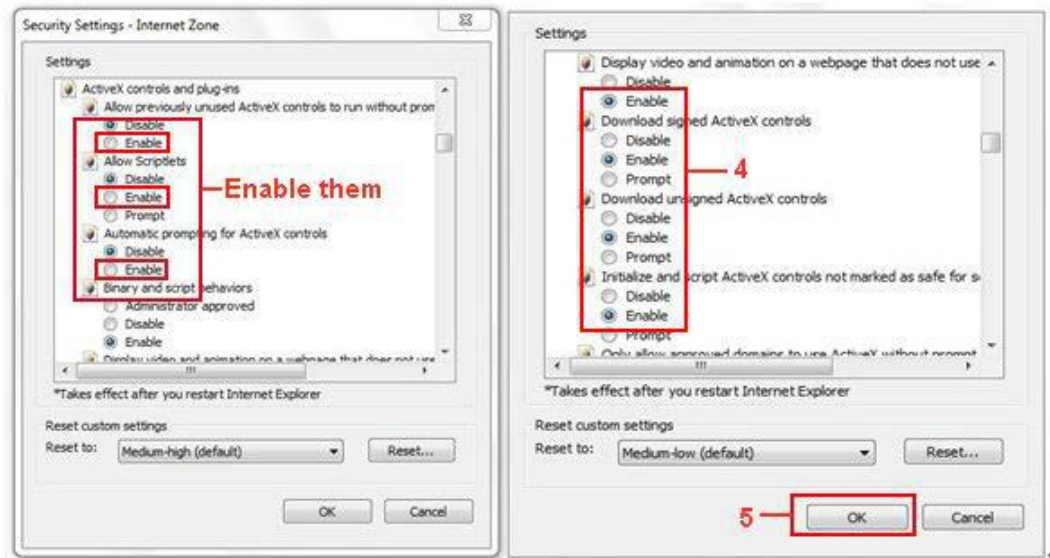
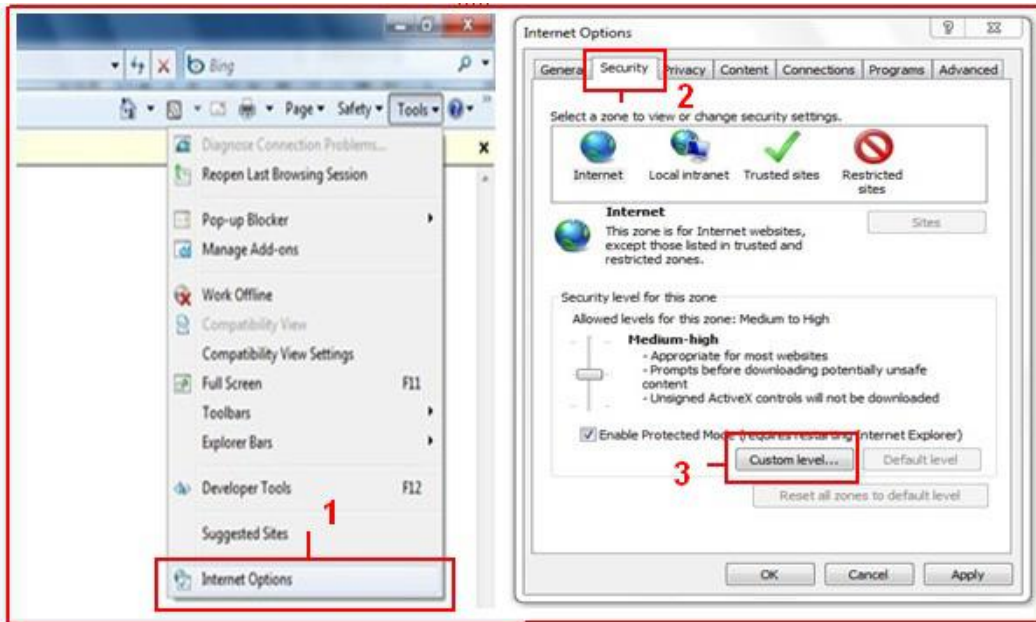
B: Change the ActiveX settings, "IE" browser > "Tool" > "Internet Options" > "Security"> "Custom Level" > "ActiveX control and Plug-ins", all the ActiveX options set to be "Enable":

Especially:

Enable: Download unsigned ActiveX controls

Enable: Initialize and script ActiveX controls not marked as safe

Enable: Run ActiveX controls and plug-ins



You can also click **“Start”** menu->**“Internet Explorer”**, and choose **“Internet attributes”**, or via **“Control Panel”** ->**“Internet Explorer”**, to access Security settings.

When you see the video, then you can go to the Step 5

Step 5: Set the Motion Detection

The screenshot shows the Sumpplle network camera web interface. The top navigation bar includes the Sumpplle logo, a camera icon, a play button, a gear icon (highlighted with a red box), and the text "NETWORK CAMERA" with a "log out" link. The left sidebar contains a menu with items: Status, Setup, Network Settings, Video, Alarm Settings (highlighted with a red box), Motion Detection (highlighted with a red box), Alarm Settings, Record, Cruise, and System. The main content area is titled "Motion Detection" and features a "Save" and "Refresh" button. On the left, there is a video preview window showing a camera view of a desk with a power cord and a pen. Below the preview is a "Motion Area list" dropdown set to "1" and "Detect All" and "Clear Detect" buttons. On the right, a configuration table is shown:

Motion Detection	On
Sensitivity	Low
Sensitivity range	default value 120
Time Interval	30 S
Schedule	<input type="checkbox"/>
Linkage With Alarm	
SD-Card Record	<input checked="" type="checkbox"/>
Send E-mail	<input type="checkbox"/>
FTP Image Upload	<input type="checkbox"/>
FTP Video Upload	<input type="checkbox"/>

Step 6: Check "Enable Auto-Cover"

The screenshot shows the Sumpplle network camera web interface. The top navigation bar includes the Sumpplle logo, a camera icon, a play button, a gear icon, and the text "NETWORK CAMERA" with a "log" link. The left sidebar contains a menu with items: Status, Setup, Network Settings, Video, Alarm Settings, Record, Local Settings (highlighted with a red box), SD Card Info (highlighted with a red box), Cruise, and System. The main content area is titled "SD Card Info" and features a "Save" and "Refresh" button. The configuration table is as follows:

Device Name	SL32G
Total Size	31080448 KB
Balance Space	30867456 KB
Status	Normal
Format	
Enable Auto-Cover	<input checked="" type="checkbox"/>
Record stream	Sub-Stream
Manual Rec	Close
Alarm Record Time	20 Second
Manual Record Pack Time	10 Minute

Step 7: Playback Video from SD Card



Search Mode ▼
File Type ▼
Begin Time
End time

Delete

	File Name	File Size
<input type="checkbox"/>	N-20160527...	9401182
<input type="checkbox"/>	N-20160527...	41192600
<input type="checkbox"/>	N-20160527...	4394882
<input type="checkbox"/>	N-20160527...	39715534
<input type="checkbox"/>	N-20160527...	39553992

