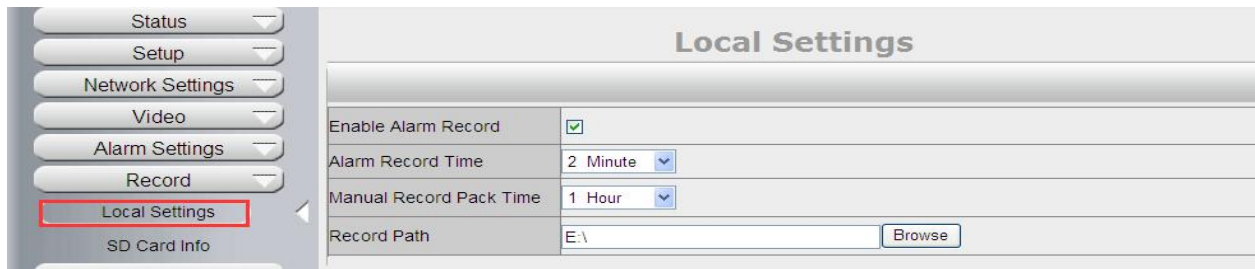
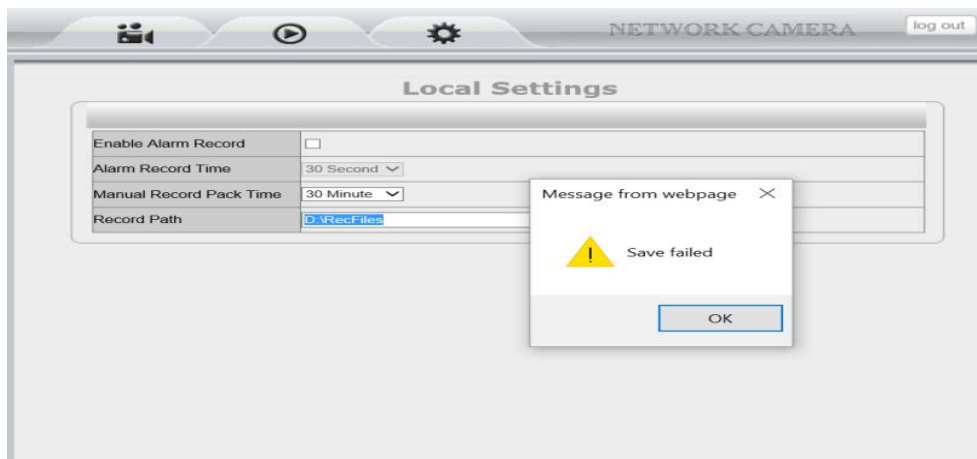


## Set the Record Path



If you face the problem of saving the record path, see the screenshot, please right click the IE 32bit web browser and choose "**Run as administrator**" to open it. **Note:** if you use Windows 7 or above, you need to choose "Run as administrator" to open the IE 32bit browser.



**Note:** to make the motion detection works well at night, please manually set the IR Control as "on" to change to Night Vision model when it is at night; if at data time, please manually set the IR Control as "Auto" when it is at day time.